



# REFERRAL

Fall 2006

## The Power of Information

**A**t the Referral and Information Services (RIS) Department, “information” is quite literally our middle name. While the majority of callers are referred to LRS lawyers, we also serve as a clearinghouse for a wide variety of other available resources. This may include referring callers to Legal Aid offices, services for seniors and people with disabilities, government agencies, or other community organizations.

RIS has an extensive list of resources for the public including the Attorney General’s Consumer Protection Hotline, EEOC, identity theft contacts, BOLI, the Construction Contractors Board, domestic violence shelters and much more. If you are unable to help someone, please consider asking them to contact RIS. We

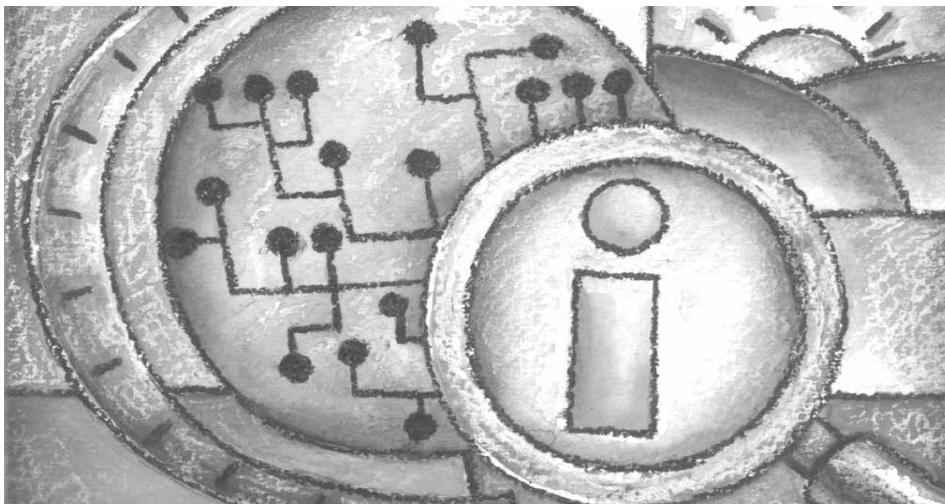
may have just the resource they are looking for.

Oregonians can also find answers to many general legal questions on the OSB website at [www.osbar.org](http://www.osbar.org). The popular legal topics page has over 100 separate legal topics—everything from consumer issues and family law, to real property, taxes and more. These same topics are available by phone through OSB’s Tel-Law program at (503) 620-3000 or (800) 452-4776 (toll-free in Oregon).

Additionally, OSB produces a regular public access cable TV show called *LegalLinks*. This 30 minute program features lawyers and other guests speaking on various legal topics. Past episodes are available by streaming video on the OSB website.

### Tell Us How We Are Doing

We want to be responsive to your practice and your needs. LRS lawyers have a good perspective on the effectiveness of the program, and we value your suggestions, complaints and kudos. Tell us about any success stories you have had with an LRS referral (keeping client confidentiality in mind). Let us know any ideas you think could enhance LRS as a tool for cultivating clients and making for a more satisfying legal practice. Send your feedback to [RIS@osbar.org](mailto:RIS@osbar.org).





## REFERRAL

Fall 2006

*Published by the Oregon State Bar  
Referral and Information Services*

### REFERRAL SERVICES

#### ADMINISTRATOR

Jon Benson, Esq.

#### LRS CLERKS

Claudia Cerda

Lauren Hicks

Jacki Smith

Chaka Washington

#### EDITORIAL STAFF

Jon Benson

Kay Pulju

#### FOR MORE INFORMATION:

[www.osbar.org](http://www.osbar.org)

(503) 620-0222, ext. 408

(800) 452-8260, ext. 408

#### LEGAL INFORMATION

##### PAMPHLETS

Free legal information pamphlets, produced and distributed by the Oregon State Bar, cover a variety of general legal topics.

To order pamphlets, call the

Oregon State Bar:

Portland: (503) 620-0222, ext. 350

Elsewhere in Oregon:

(800) 452-8260, ext. 350

# Program Spotlight

## Problem Solvers

**W**ant something that is personally and professionally rewarding and does not require a big time commitment? Consider the Problem Solvers program.

Oregon youth aged 11 to 17 can get free, confidential consultations from volunteer OSB lawyers through Problem Solvers. Although times change, many of the difficulties faced by adolescents and teens remain constant. Legal issues can run the gamut, but are concentrated in the areas of family law, emancipation, school issues, driving privileges and employment.

As an Oregon lawyer, you can make a substantial impact in the life of a young person facing a legal problem by volunteering with Problem Solvers. Generally, the consultations are 30 minutes or less. If you would be interested in volunteering for Problem Solvers, or would like more information, call (503) 620-0222, ext. 408, or toll-free in Oregon (800) 452-8260, ext. 408.

*Time spent volunteering for Problem Solvers can be included in your hours for the Pro Bono Honor Roll.*

## Getting Clients in your Sleep

Legal issues don't always arise during regular business hours. Even when your office is closed LRS can serve as an avenue to connect you with potential clients, because the LRS online referral system never sleeps. Clients can submit online referral requests to LRS 24 hours a day, seven days a week. In this way we can serve people whose issues arise during odd hours or whose schedules make it difficult to call the LRS phone line.

The number of online requests has been increasing rapidly in recent years as consumers have come to conduct more and more of their business via the Internet. LRS staff work to quickly process all of the requests that come in overnight, as well as those that accumulate throughout the day. Monday mornings and the days after extended holidays are generally the busiest times. Potential clients can find the "Online Referral Request Form" on the right-hand side of the OSB home page at [www.osbar.org](http://www.osbar.org).

## Some Lawyers Are “Special”

LRS has several Special Subject Matter Panels. To register for one of these panels, the lawyer must qualify based upon training and experience. Currently, these panels include:

1. Major and lesser felonies (including capital cases);
2. Interstate and independent adoptions; and

3. Immigration deportation defense (including removal and exclusion).

Application forms are available through the OSB forms library on the OSB website. For more information, please call the LRS attorney line at (503) 620-0222, ext. 408, or (800) 452-8260, ext. 408.



## The Evolving Practice of Law

We want to keep on top of emerging issues in the law. As new practice areas become more prevalent, we may add them to our list of LRS categories. Recent additions

include:

1. Health law/HIPAA
2. Medicare/Medicaid planning
3. Collaborative family law
4. Identity theft

5. Homeowners association issues

If you have any tips or suggestions for legal topics that are on the horizon, please contact us (see Sidebar above).

### PRACTICE TIPS YOU CAN USE

Check out these resources to help your practice:

1. **Casemaker:** <http://www.osbar.org>

This free online legal research tool is available to all active OSB members. Research cases, statutes, AG opinions and ethics opinions. Casemaker also has specialized libraries for Land Use Board of Appeals (LUBA) opinions and workers compensation opinions.

Currently, Casemaker is being expanded and enhanced. It is scheduled to contain legal libraries for all 50 states by the end of 2006. It will also expand its library of U.S. Supreme Court and Circuit Court of Appeals opinions. Go to the main OSB website, [www.osbar.org](http://www.osbar.org), and click on the yellow “Member Login” button.

2. **Corporation Division, Oregon Secretary of State office:** <http://www.sos.state.or.us/corporation>

Find current listings for business entities, registered agents for service of process.

3. **Case law updates:**

<http://www.willamette.edu/wucl/wlo>

Receive free e-mail summaries of recent appellate opinions with links to the full text of each opinion. Includes U.S. Supreme Court, Oregon Supreme Court, 9th Circuit Court of Appeals, Oregon Court of Appeals and intellectual property decisions.

4. **Oregon legislature website:**

<http://www.leg.state.or.us/>

The 2007 legislative session begins January 8, 2007. Keep on top of bills that may affect your practice.

5. **All about Oregon:** <http://www.oregon.gov>

Visit this site for a complete listing of government agencies, contacts and services.

6. **Supplemental Local Rules (SLRs):**

<http://www.ojd.state.or.us>

Don't get “home-towned” – the complete listing of SLRs for each county can be found for free on the Oregon Judicial Department website. Go to the department homepage at [www.ojd.state.or.us](http://www.ojd.state.or.us) and click on the “Rules” tab. A direct link (though a longer URL) is at: [www.ojd.state.or.us/Web/OJDPublications.nsf/SLR?OpenView&count=1000](http://www.ojd.state.or.us/Web/OJDPublications.nsf/SLR?OpenView&count=1000)

# JULY 2005– JUNE 2006 REFERRALS BY LOCATION

Location	Referrals	No Shows	Net Referrals	LRS Members	Location	Referrals	No Shows	Net Referrals	LRS Members	Location	Referrals	No Shows	Net Referrals	LRS Members
Albany	1,055	333	722	13	Hood River	273	85	188	6	Rainier	1	0	1	1
Aloha	86	40	46	4	Klamath Falls	478	194	284	10	Redmond	313	69	244	3
Ashland	235	77	158	6	La Grande	242	90	152	5	Roseburg	795	323	472	9
Astoria	83	24	59	1	Lake Oswego	651	225	426	55	Salem	4,993	2,017	2,976	102
Baker	99	28	71	3	Lincoln City	167	53	114	7	Seaside	127	35	92	3
Beaverton	3,220	1,296	1,924	74	Madras	0	0	0	1	Sisters	2	0	2	1
Bend	1,829	747	1,082	36	McMinnville	571	268	303	12	Springfield	136	42	94	7
Brookings	127	50	77	5	Medford	2,656	892	1,764	30	St. Helens	197	106	91	1
Burns	3	2	1	1	Milton/Freewater	1	0	1	1	The Dalles	259	77	182	10
Canby	65	29	36	5	Milwaukee	910	356	554	12	Tigard	962	382	580	32
Coos Bay	744	308	436	12	Molalla	4	2	2	1	Tillamook	158	41	117	8
Cottage Grove	33	23	10	1	Newberg	130	29	101	5	Tualatin	310	123	187	10
Corvallis	829	324	505	21	Newport	356	140	216	14	Vancouver	0	0	0	1
Dallas	62	17	45	3	Ontario	325	145	181	6	West Linn	121	39	82	14
Enterprise	9	4	5	1	Oregon City	2,222	903	1,319	36	Wilsonville	104	35	69	5
Eugene	4,192	1,747	2,445	93	Pendleton	570	98	472	7	Woodburn	156	79	77	4
Forest Grove	28	10	18	3	Portland DT	8,627	3,529	5,098	288	<b>Total</b>	<b>51,911</b>	<b>20,385</b>	<b>31,527</b>	<b>1,273</b>
Gladstone	27	8	19	1	Portland NE	2,500	944	1,556	50					
Gresham	1,470	655	815	26	Portland N	457	195	262	10					
Grants Pass	1,224	529	695	16	Portland NW	141	41	100	14					
Hermiston	16	0	16	2	Portland SE	3,583	1,477	2,106	54					
Hillsboro	2,093	774	1,319	55	Portland SW	884	326	558	53					

## JUL 05– JUN 06 REFERRALS BY PANEL

Panel	Referrals	No Shows	Net Referrals	LRS Members
Administrative Law	2,384	932	1,452	207
Bankruptcy	1,264	529	735	140
Business/Corporate	1,129	448	681	518
Consumer	3,156	1,235	1,921	131
Criminal	3,880	1,500	2,380	404
Criminal Modest Means	120	24	96	123
Debtor/Creditor	2,707	990	1,717	168
Family Law	9,965	4,042	5,924	588
Family Law Modest Means	1,028	234	794	165
General Litigation	10,207	4,259	5,948	769
Intellectual Property	356	122	234	89
Labor & Employment	4,454	1,641	2,813	213
Labor & Employment (Employer Only)	49	14	35	13
Real Estate	6,356	2,660	3,696	560
Real Estate Modest Means	22	5	17	59
Tax Law	381	135	246	77
Estate Planning	2,206	898	1,308	598
Worker's Compensation	1,466	433	1,033	98
International Law	678	268	410	69
Military Law	103	16	87	121
<b>Total</b>	<b>51,911</b>	<b>20,385</b>	<b>31,527</b>	<b>5,110</b>



**Oregon State Bar**  
5200 SW Meadows Road  
Lake Oswego, OR 97035

Presorted Standard  
US Postage Paid  
Portland, Oregon  
Permit No. 341